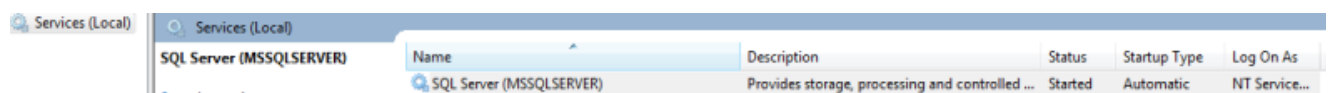
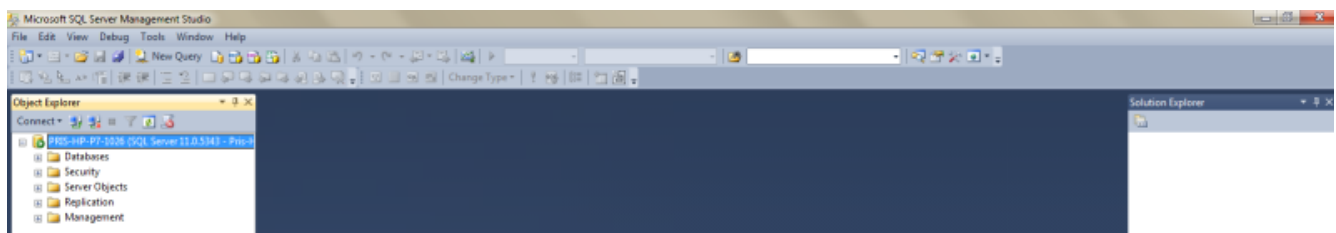


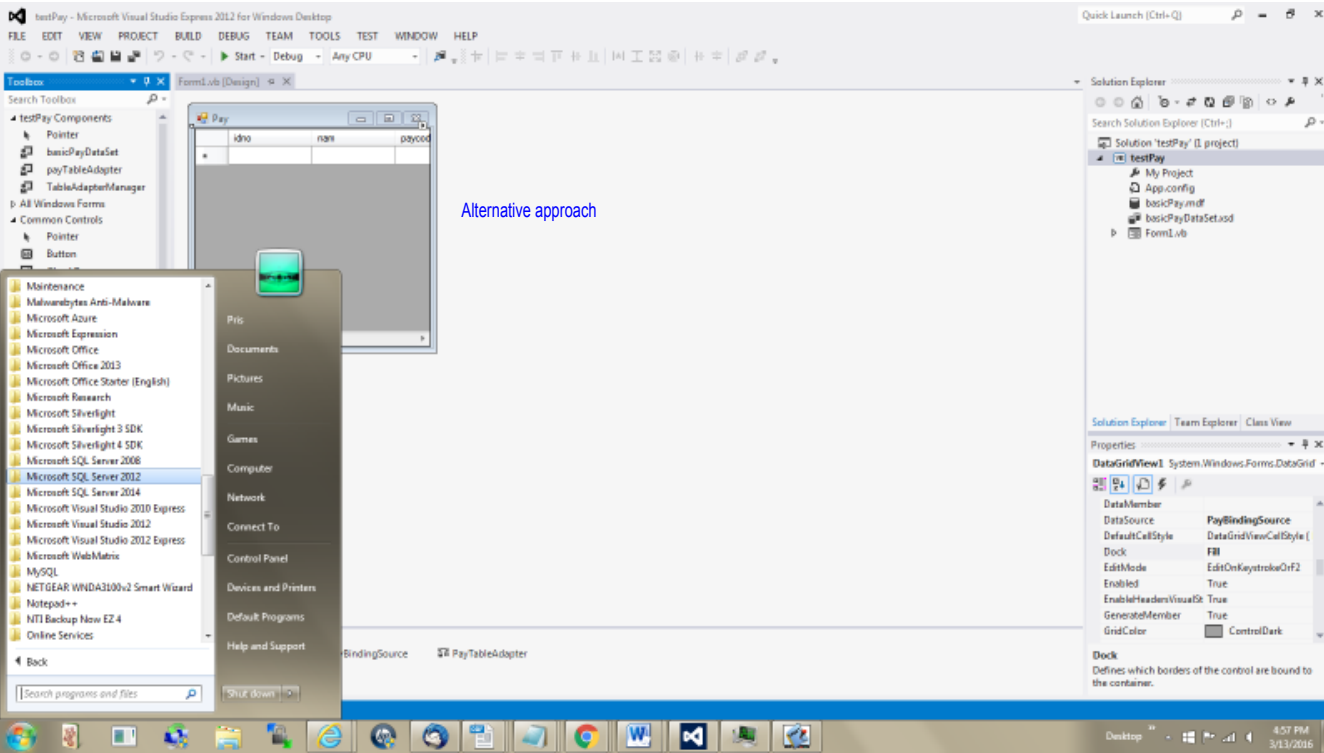
I opened Microsoft SQL Server Management Studio and a box came up with the server type of Database Engine, the server name, an authentication which was Windows Authentication. It gave my user name and I clicked on Connect.



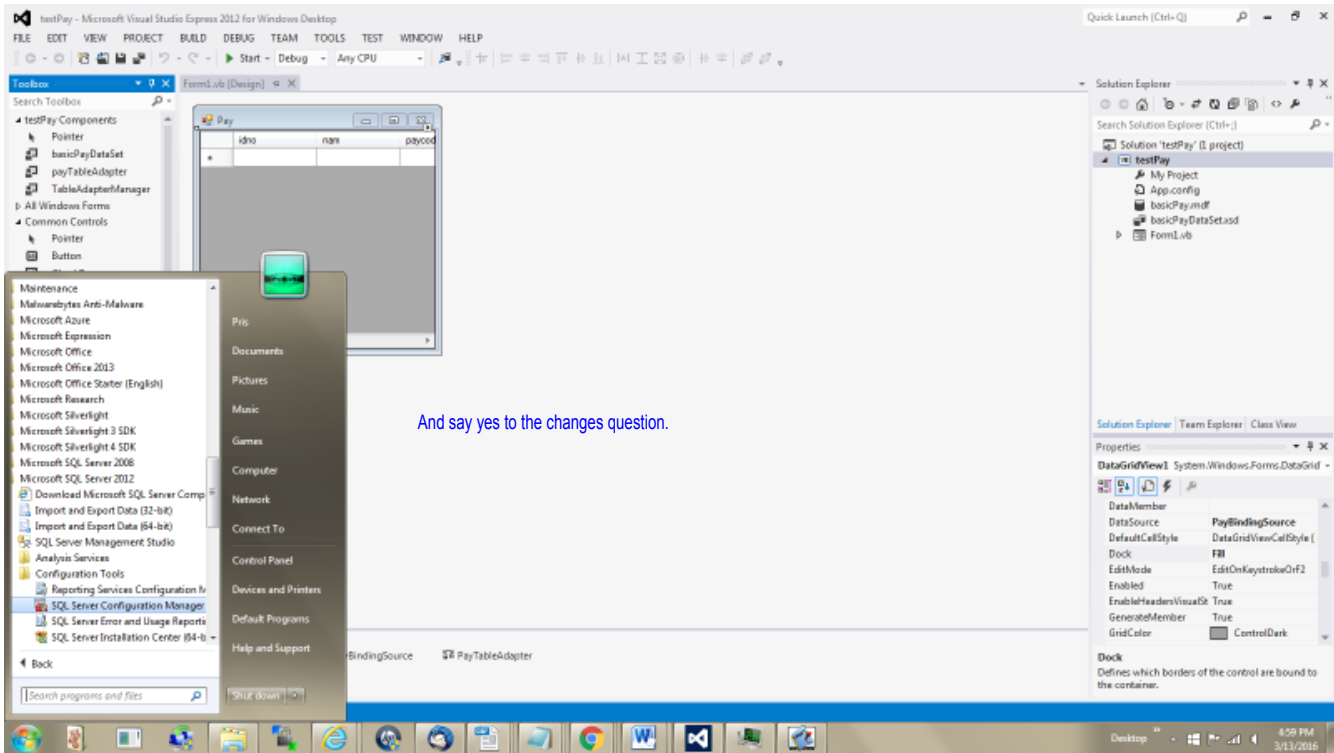
I need to make sure that the server is started.

Once the connection happens, this is what you will see.

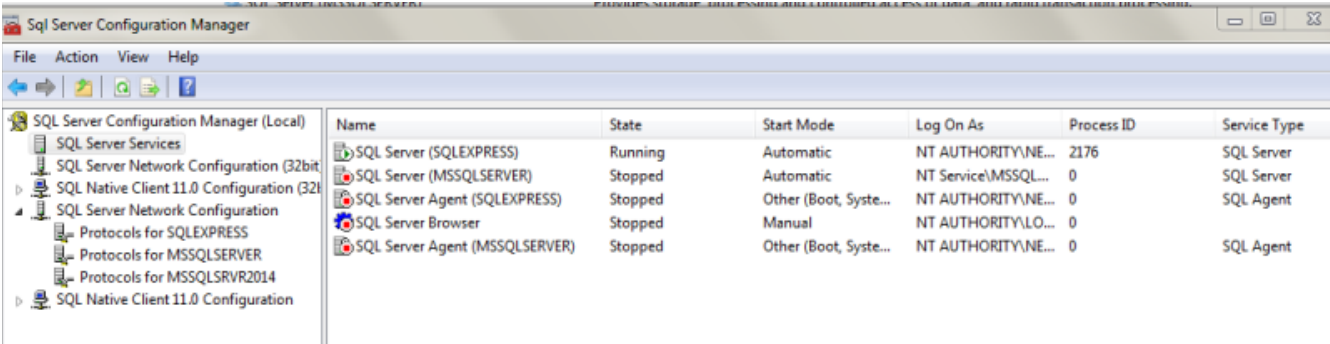




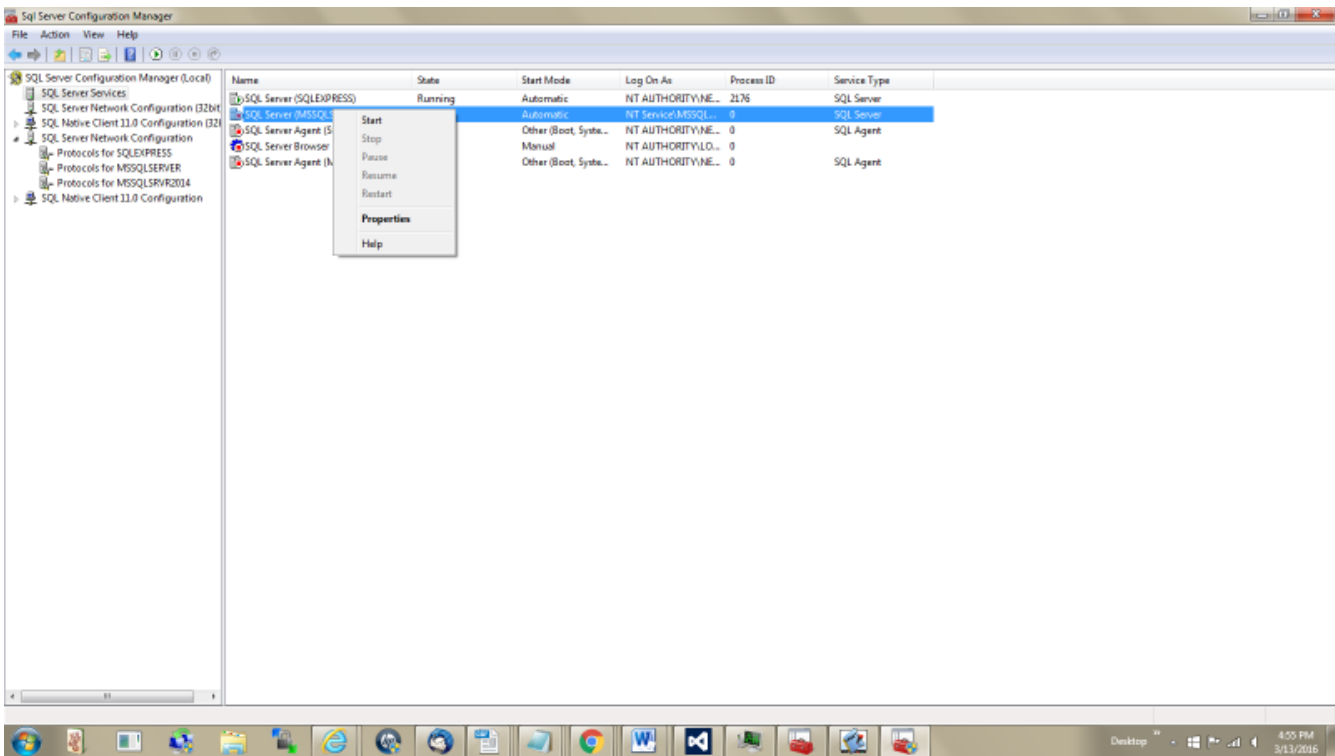




And say yes to the changes question.



Either approach ends up here.
After you have worked with it, I find it goes to the screen in slide 8.



Sql Server Configuration Manager

File Action View Help

SQL Server Configuration Manager (Local)

Name	State	Start Mode	Log On As	Process ID	Service Type
SQL Server (SQLEXPRESS)	Running	Automatic	NT AUTHORITY\NE...	2176	SQL Server
SQL Server (MSSQLSERVER)	Running	Automatic	NT Service\MSSQL...	271648	SQL Server
SQL Server Agent (SQLEXPRESS)	Stopped	Other (Boot, Syste...	NT AUTHORITY\NE...	0	SQL Agent
SQL Server Browser	Stopped	Manual	NT AUTHORITY\LO...	0	
SQL Server Agent (MSSQLSERVER)	Stopped	Other (Boot, Syste...	NT AUTHORITY\NE...	0	SQL Agent

SQL Server Services

SQL Server Network Configuration (32bit)

SQL Native Client 11.0 Configuration (32bit)

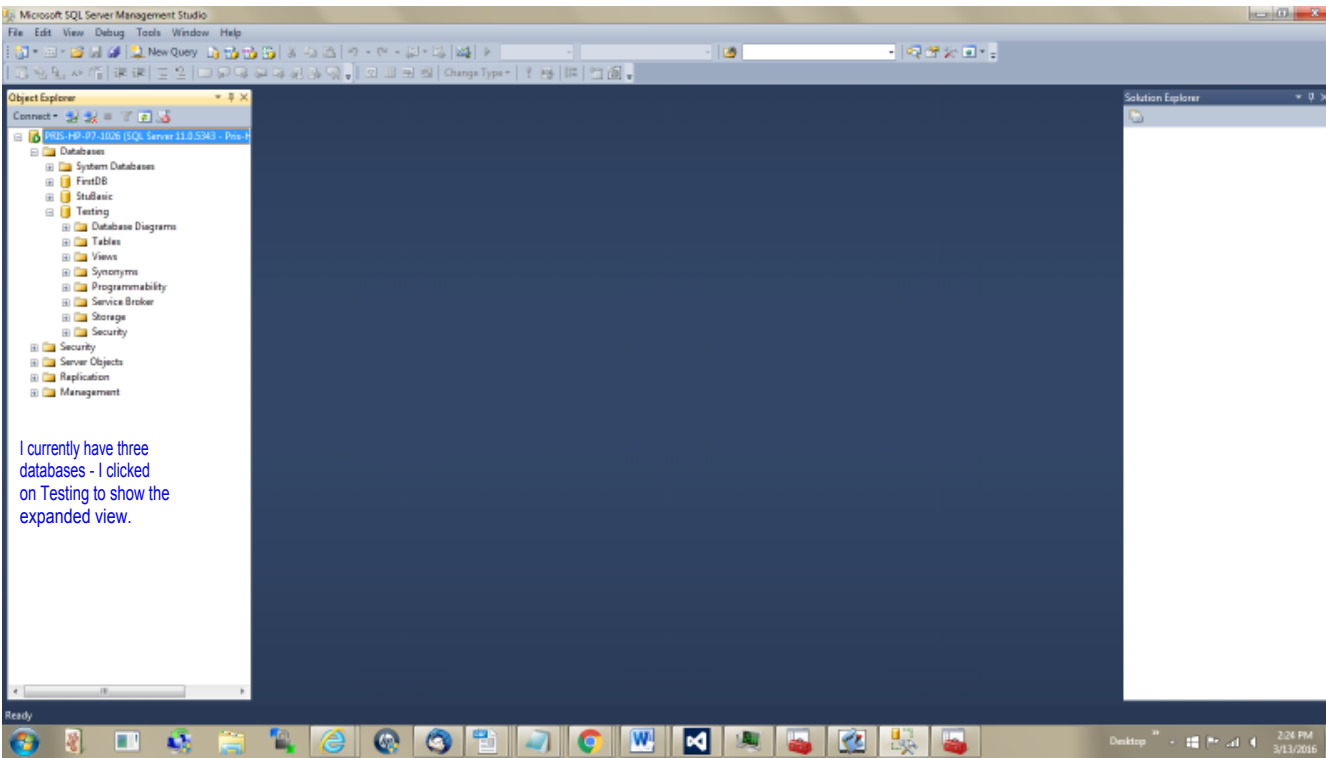
SQL Server Network Configuration (32bit)

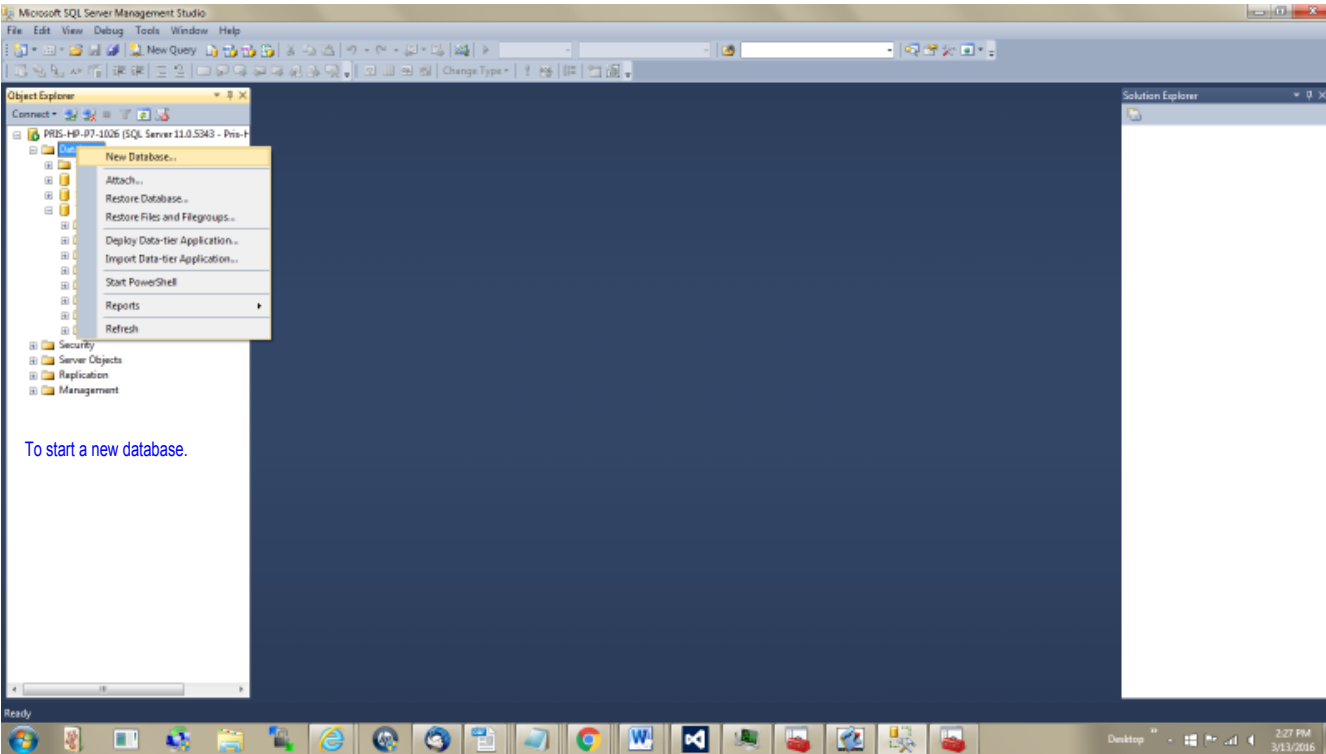
Protocols for SQLEXPRESS

Protocols for MSSQLSERVER

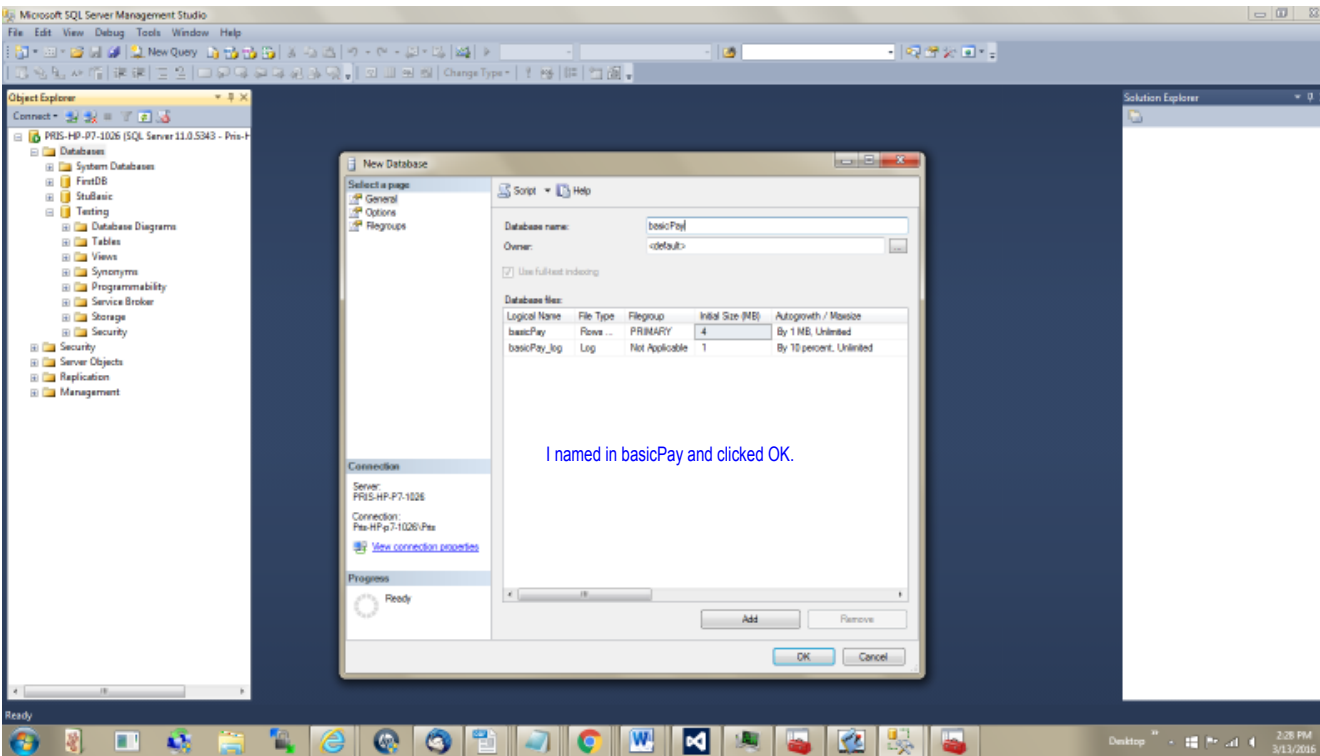
Protocols for MSSQLSRVR2014

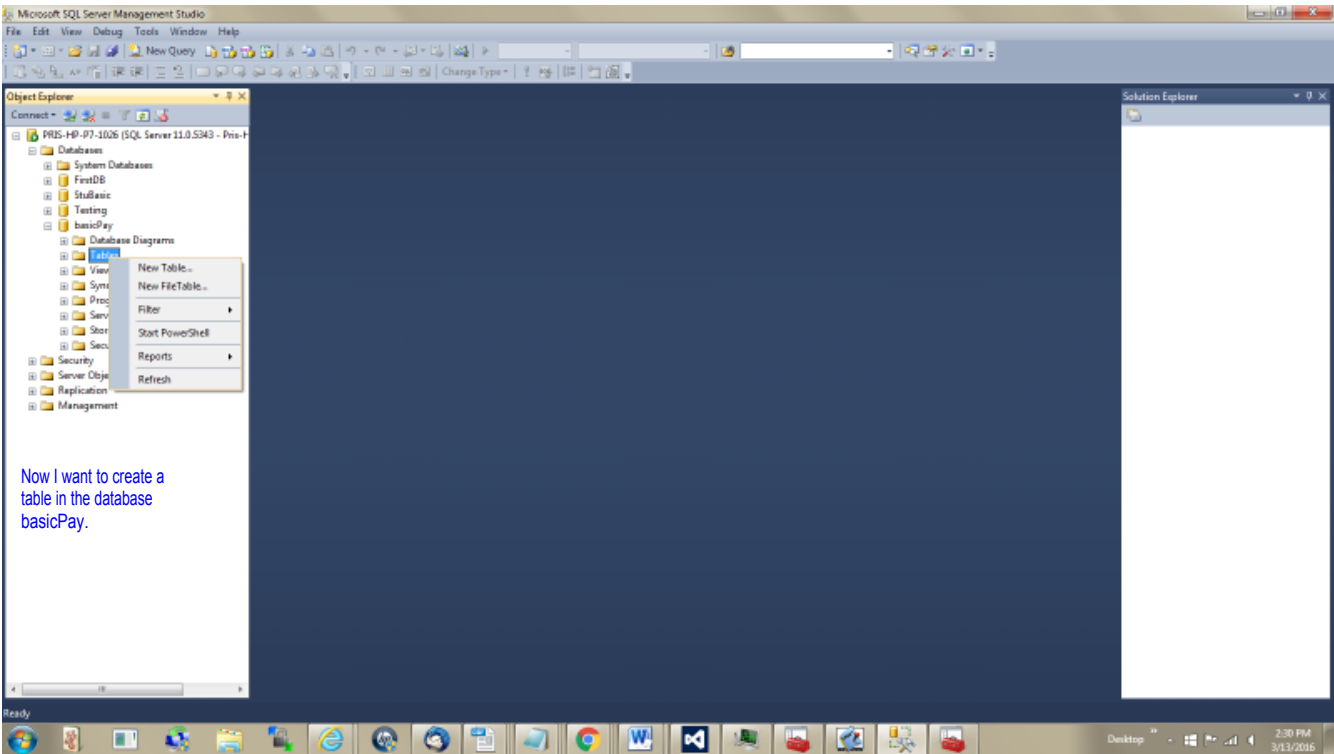
SQL Native Client 11.0 Configuration



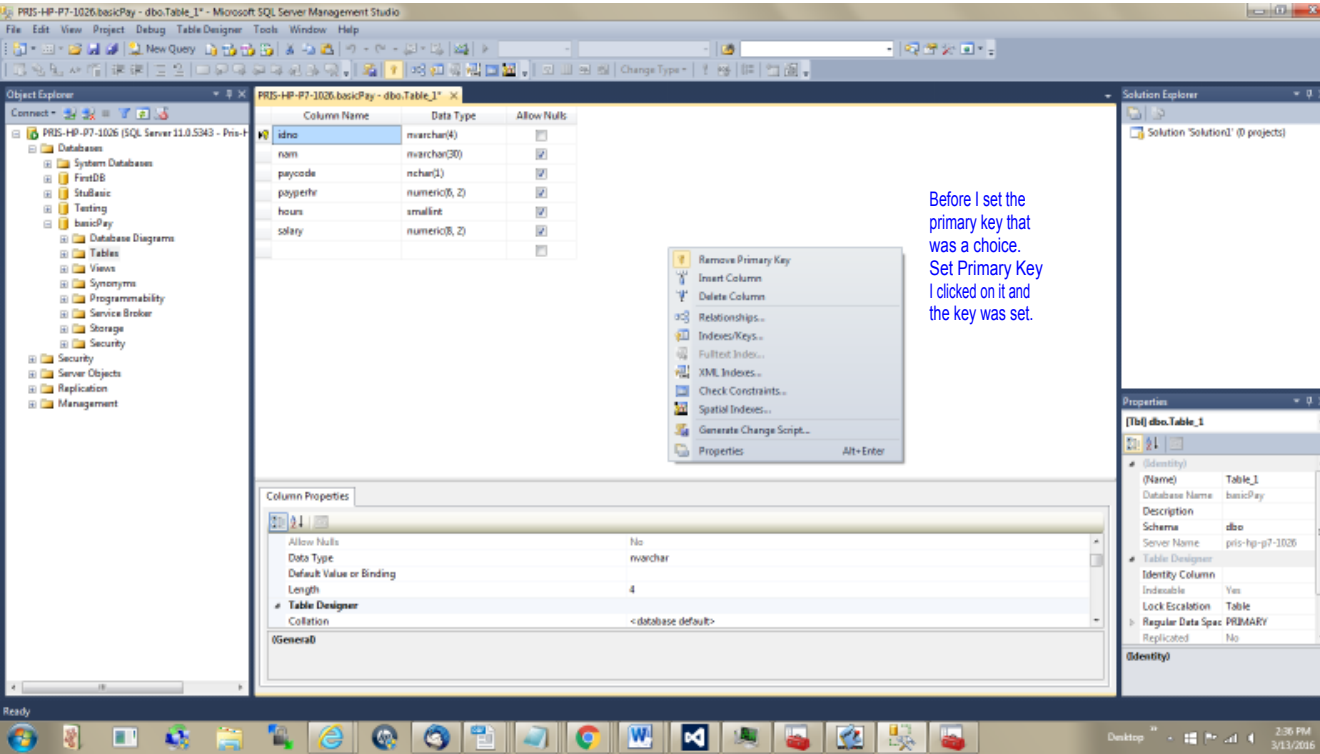


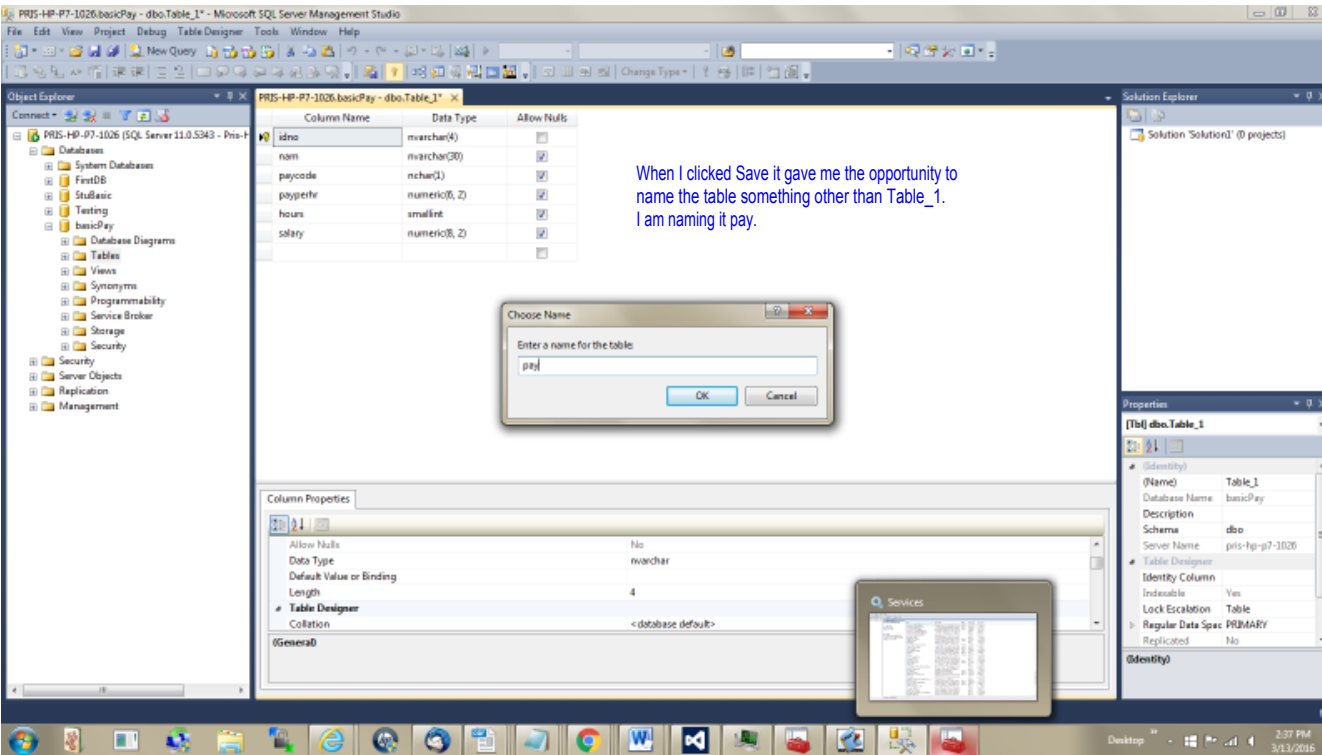
To start a new database.

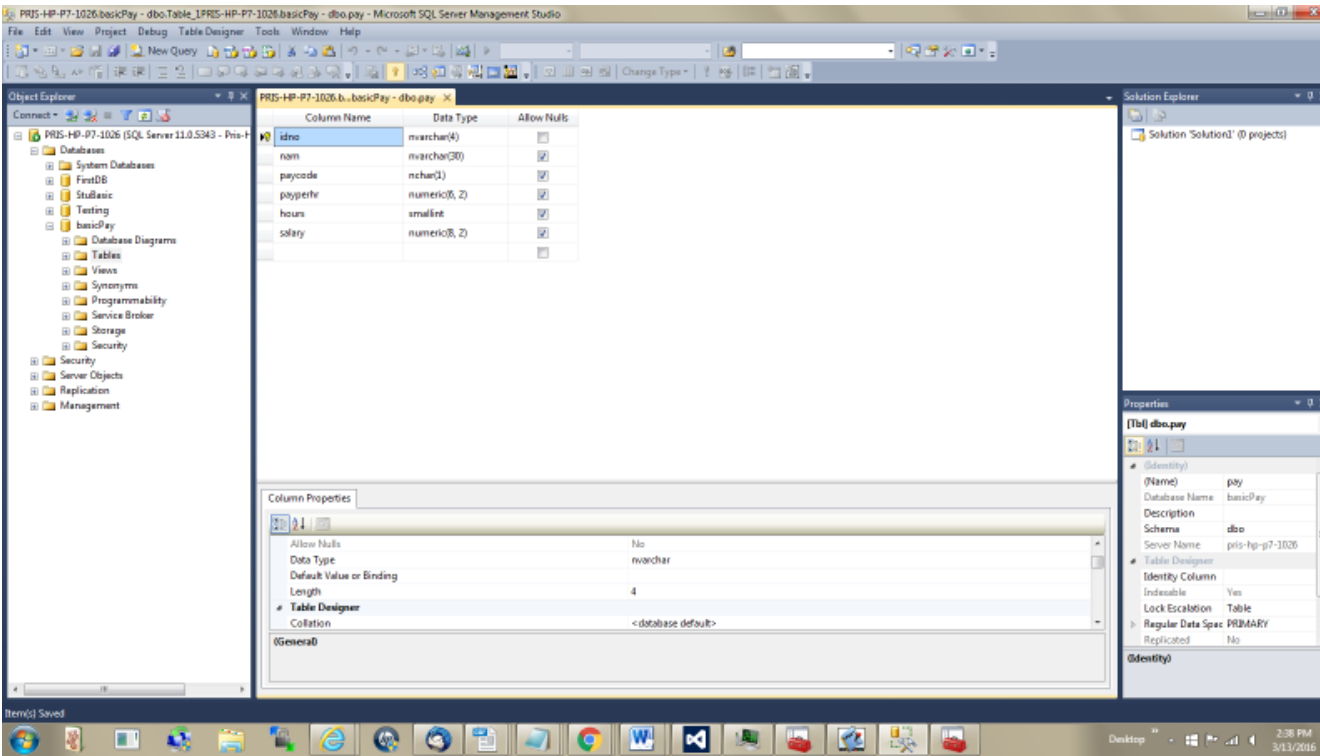


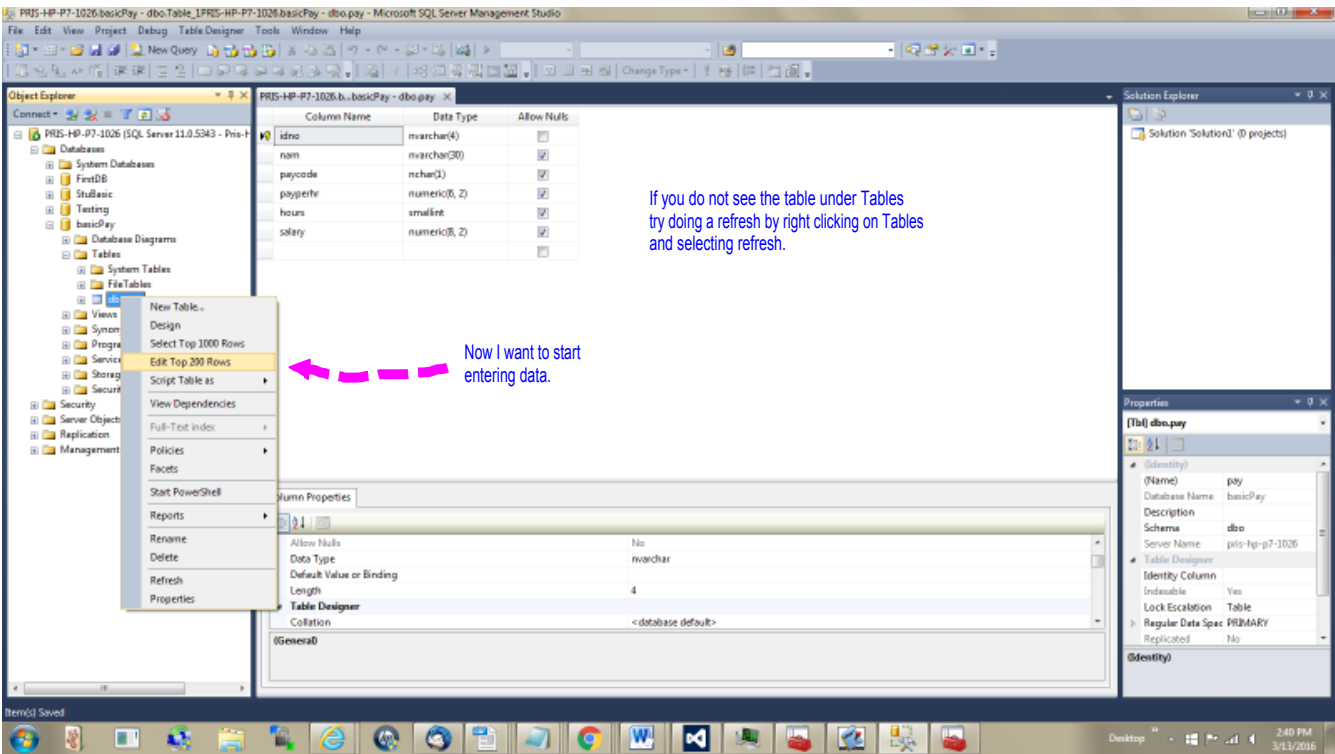


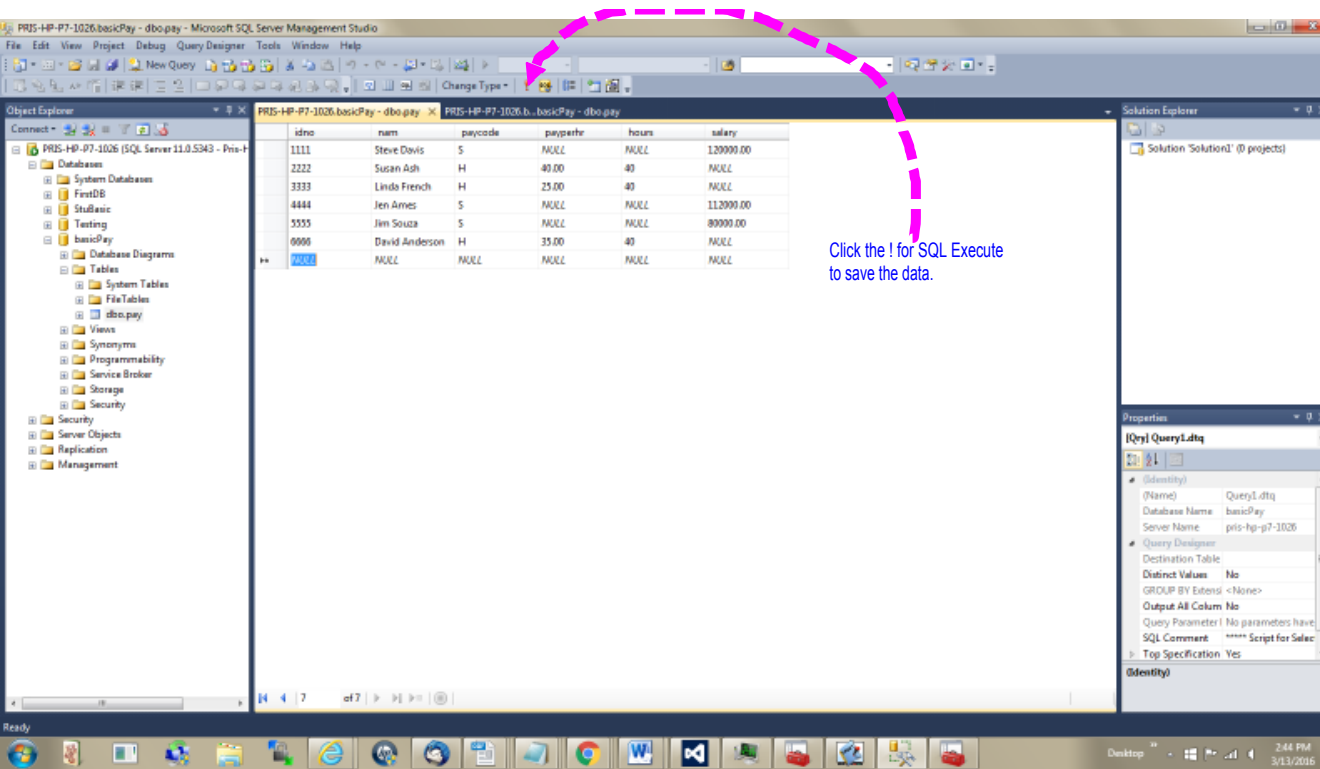
Now I want to create a
table in the database
basicPay.

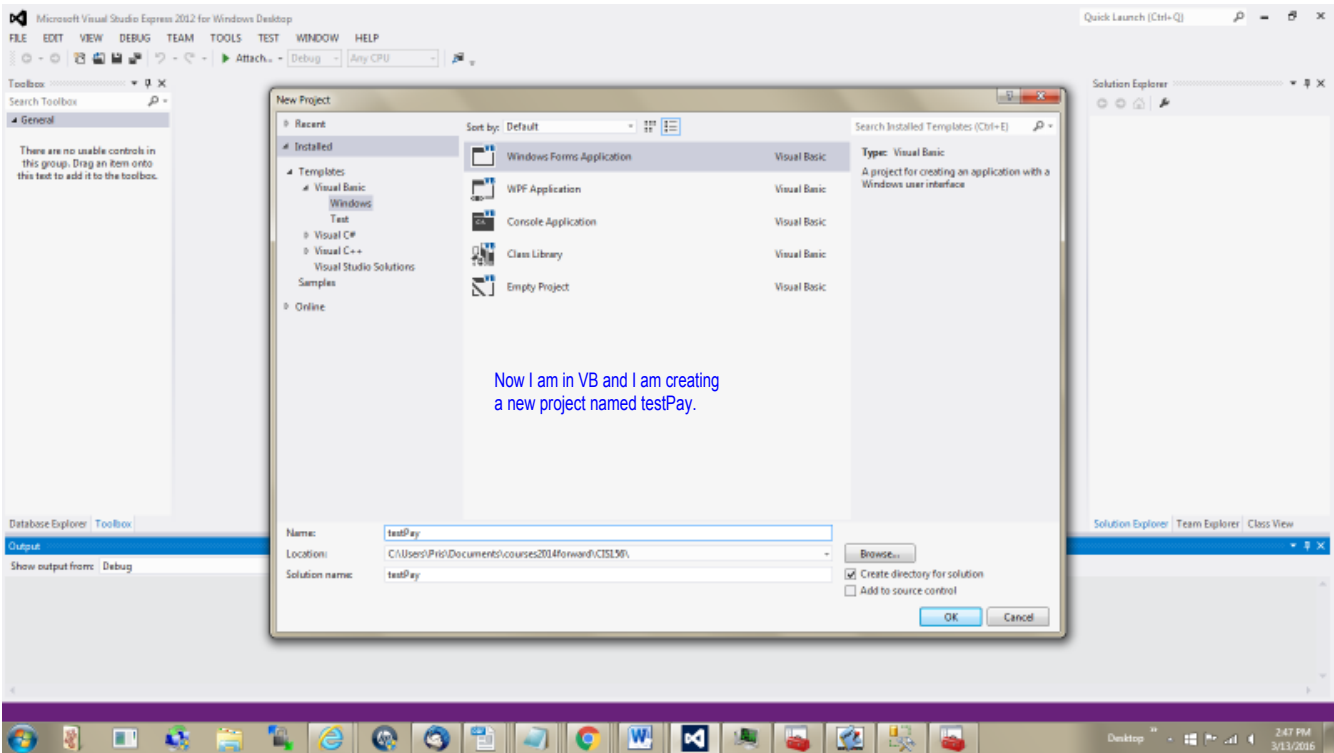


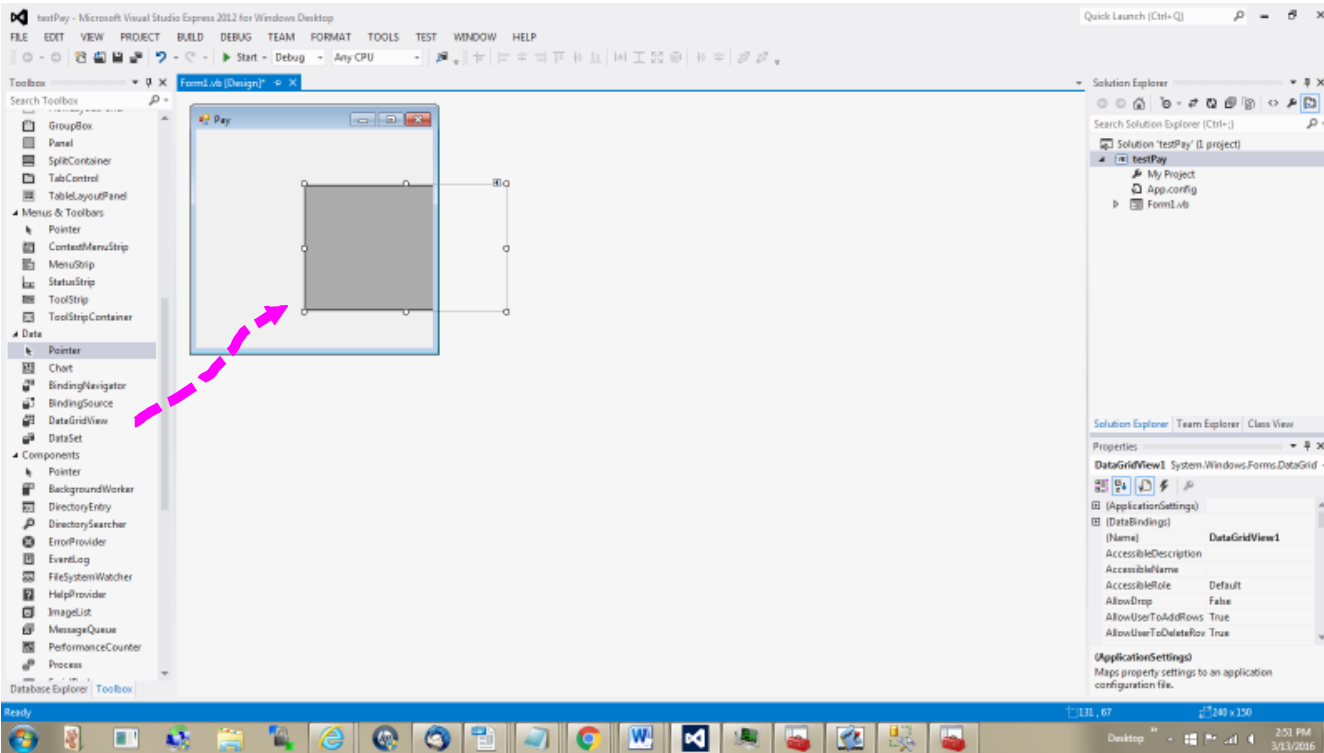


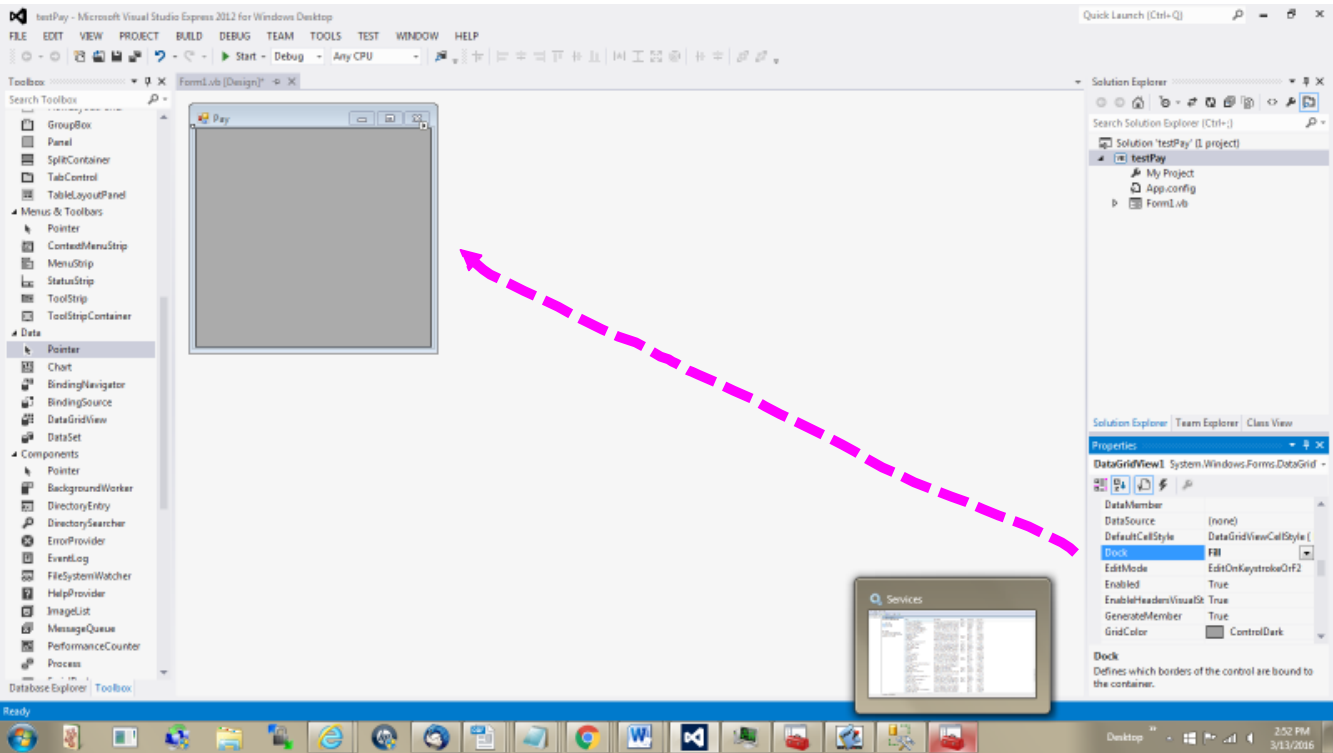


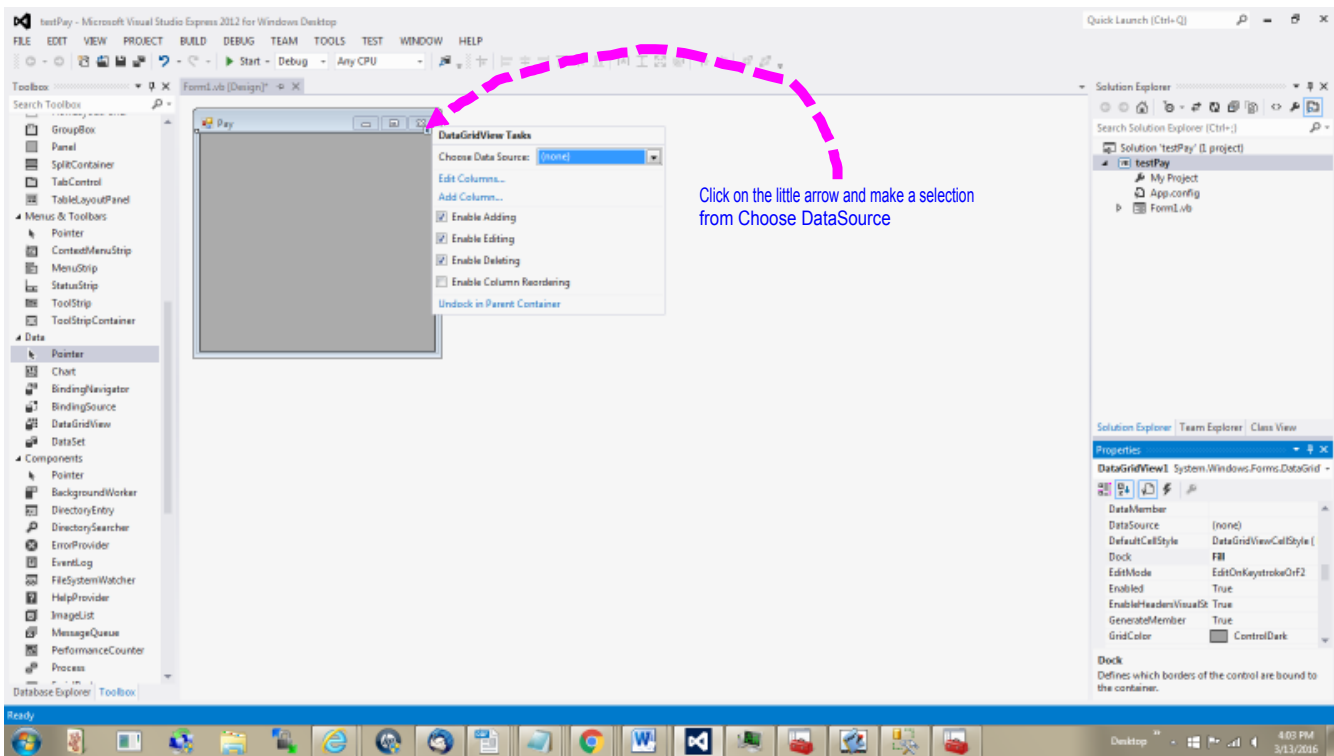


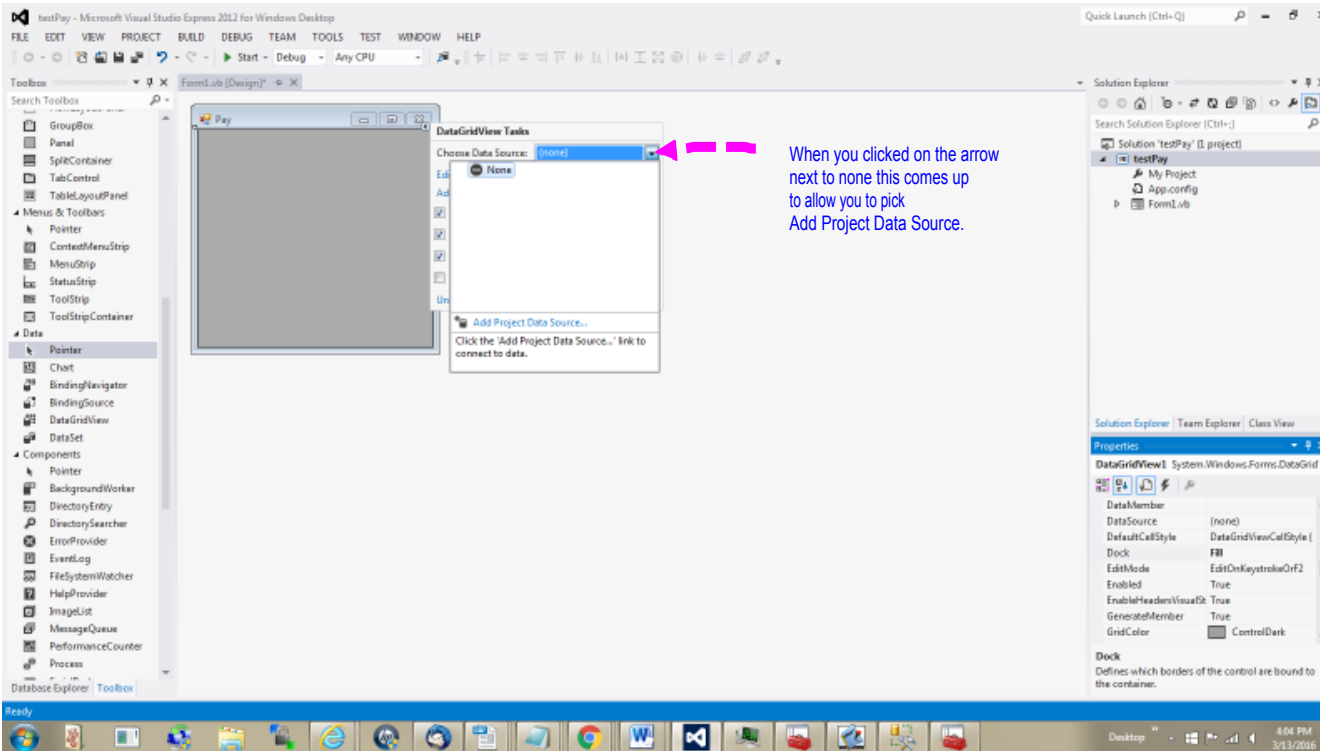


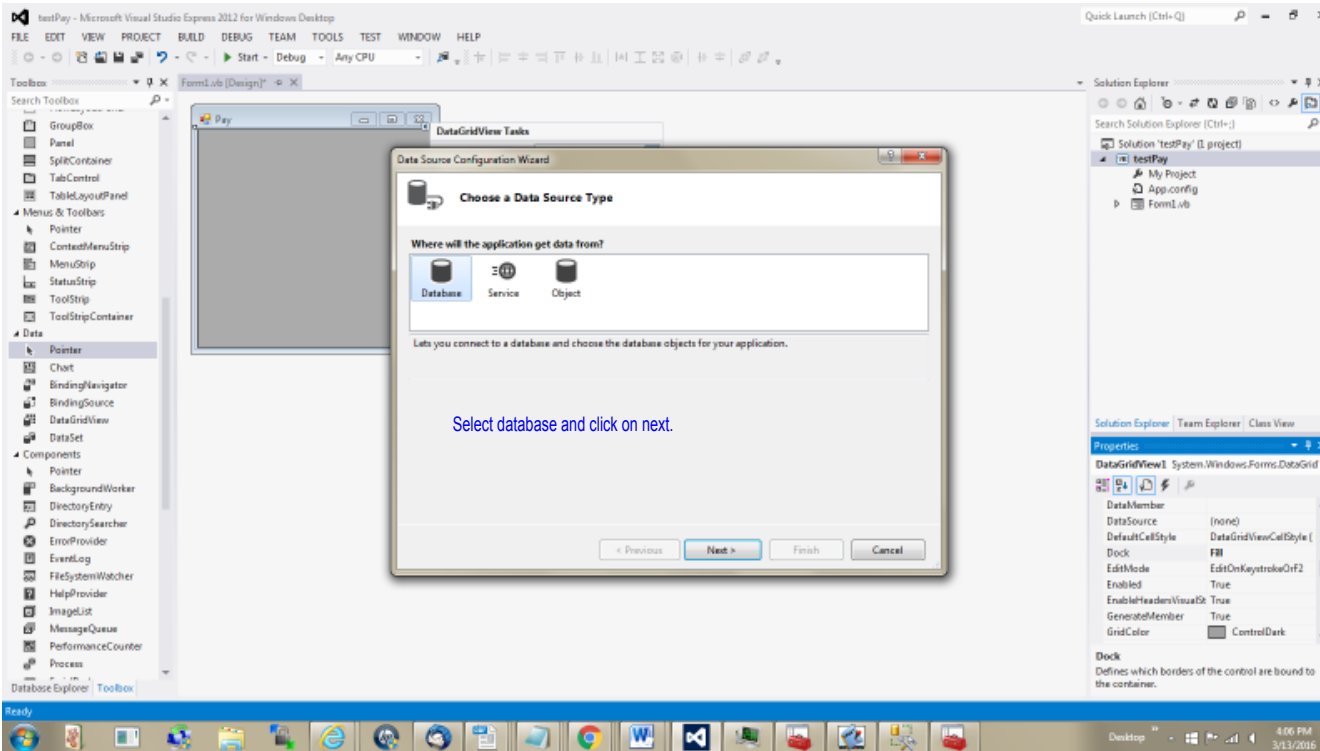


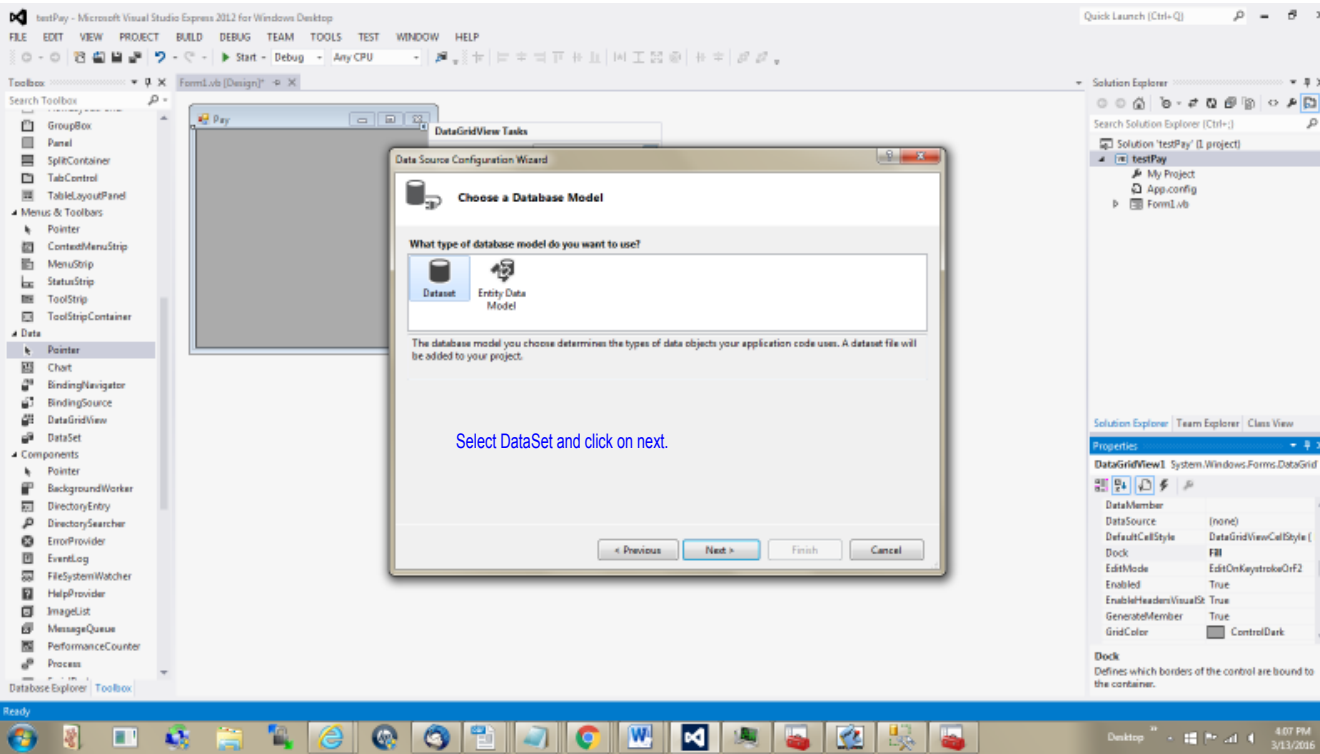


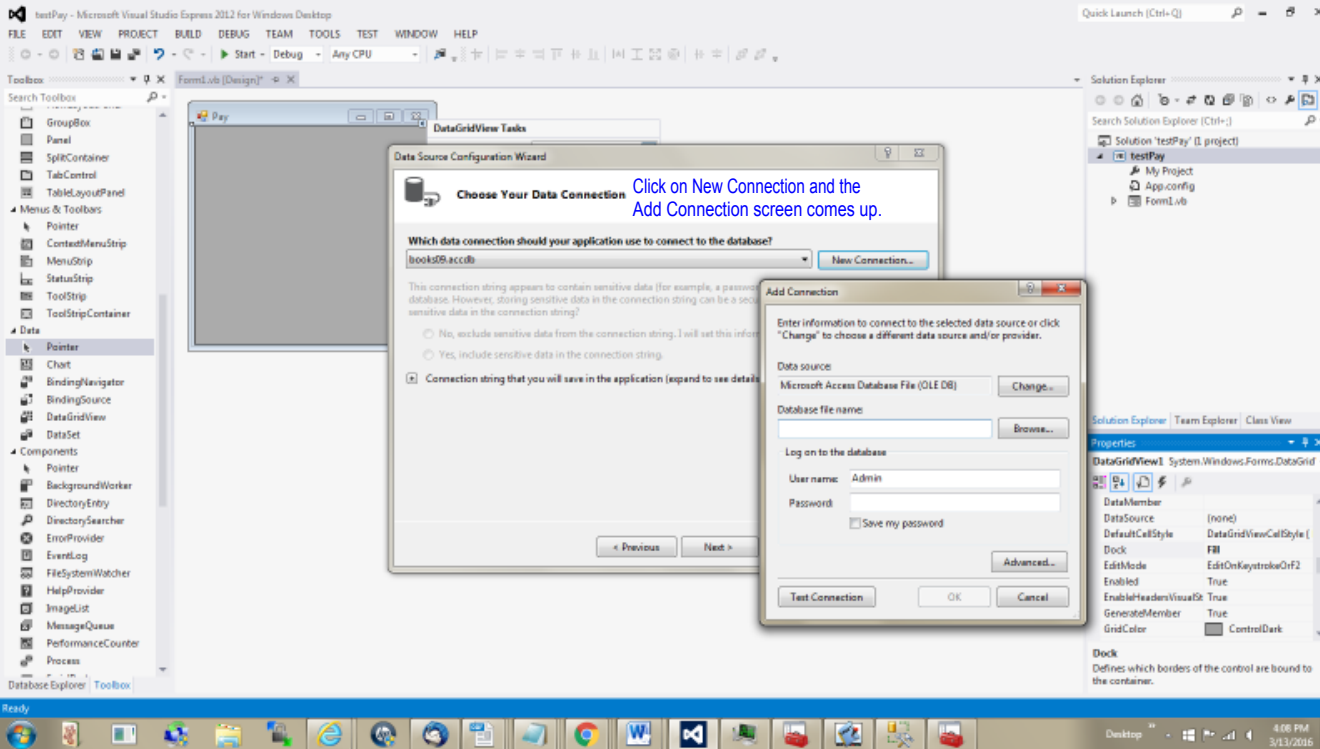


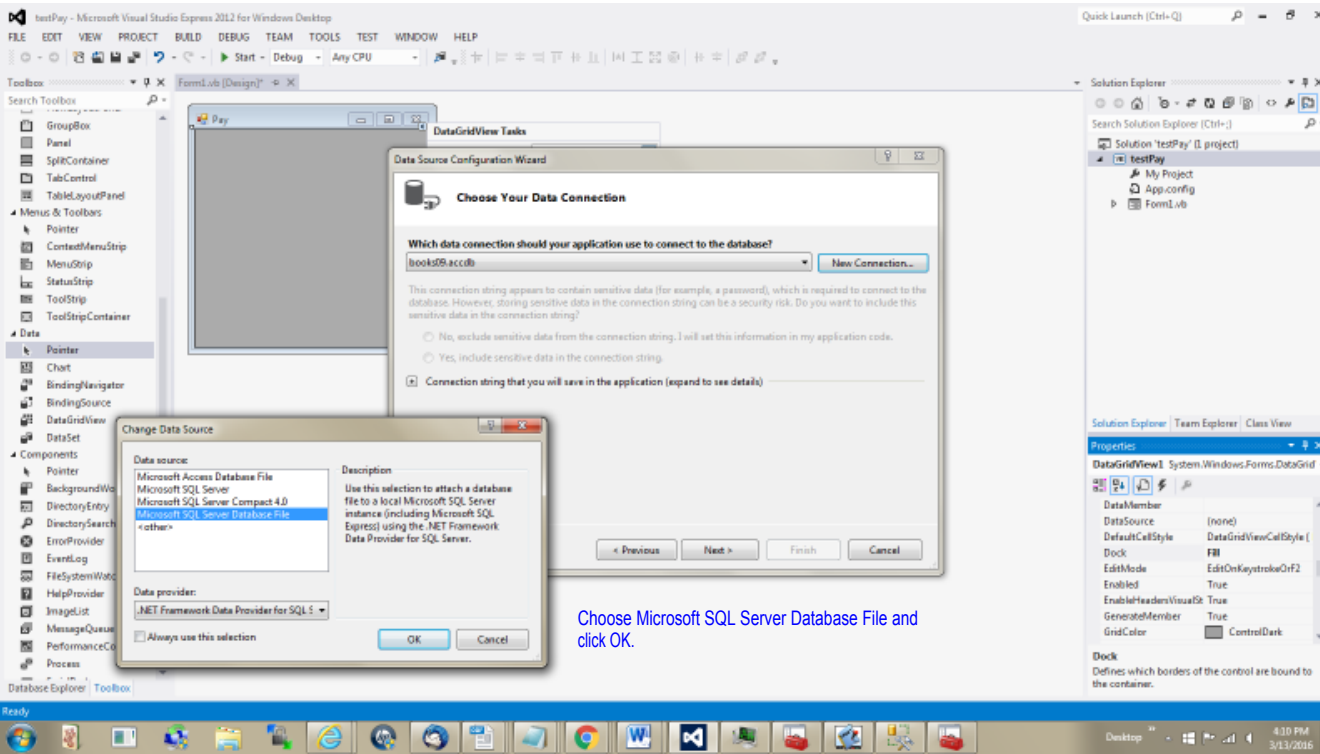


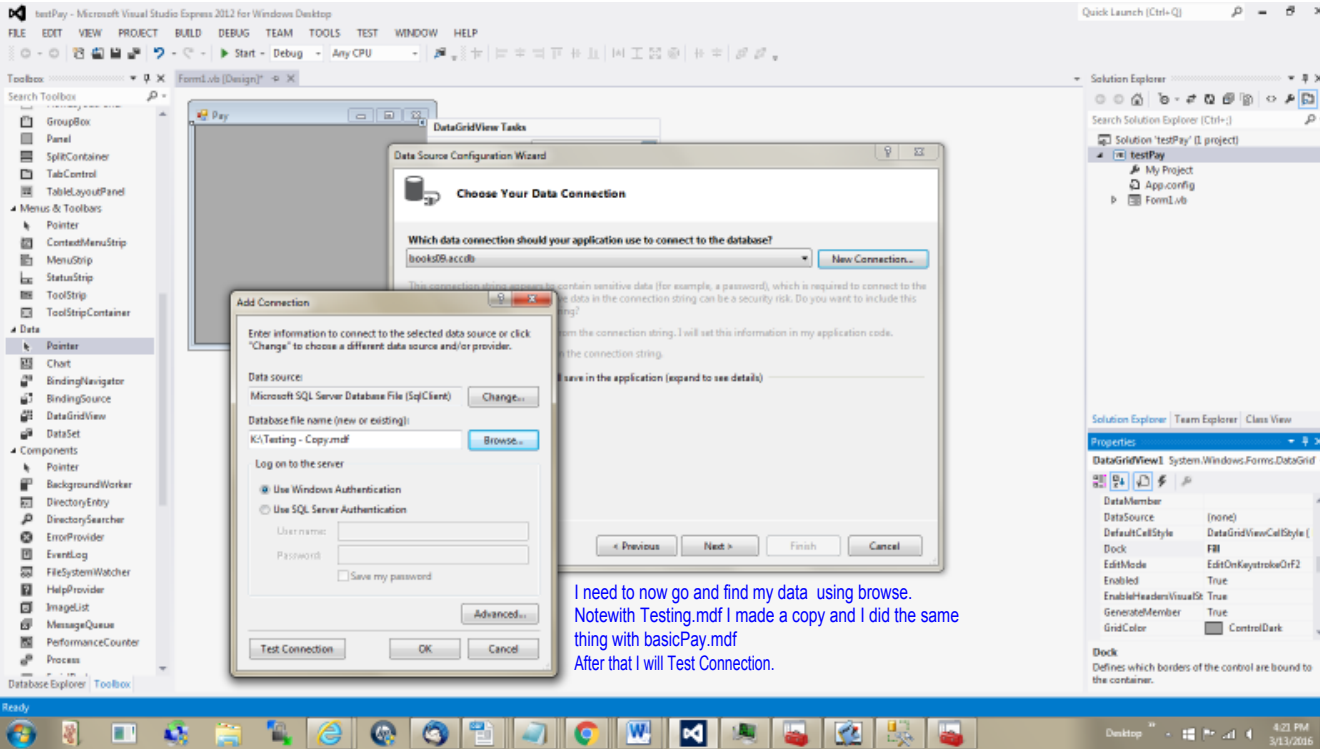


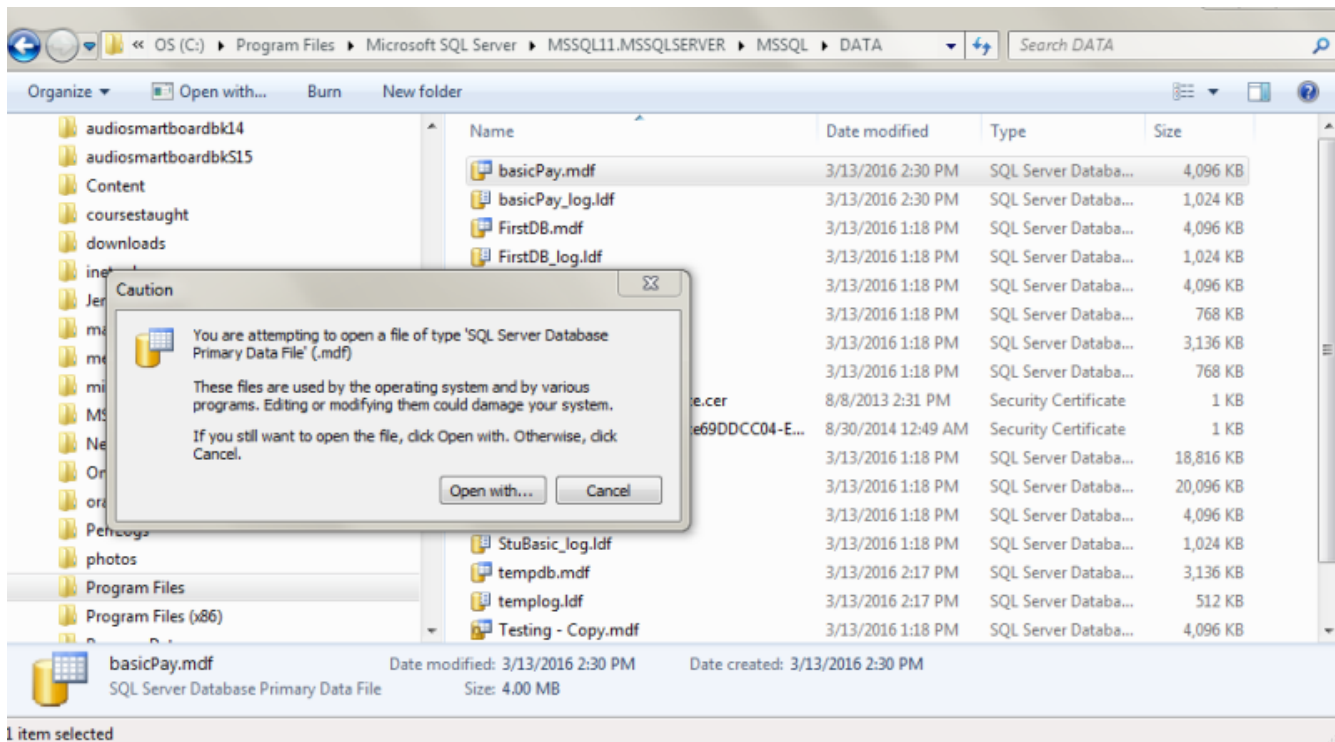




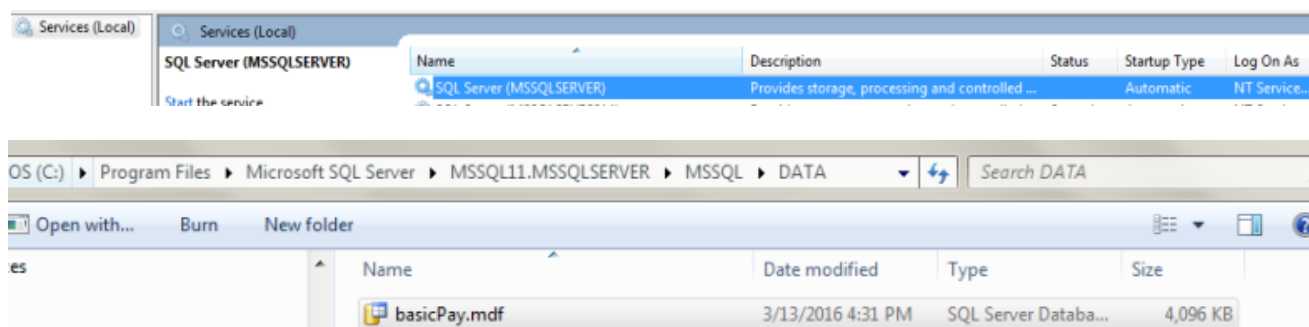








I need to make a copy of basicPay.mdf so I need to change the status from started to stop.



I highlight basicPay.mdf, click on copy and paste it where I want it. I put it on the route of my K drive.

