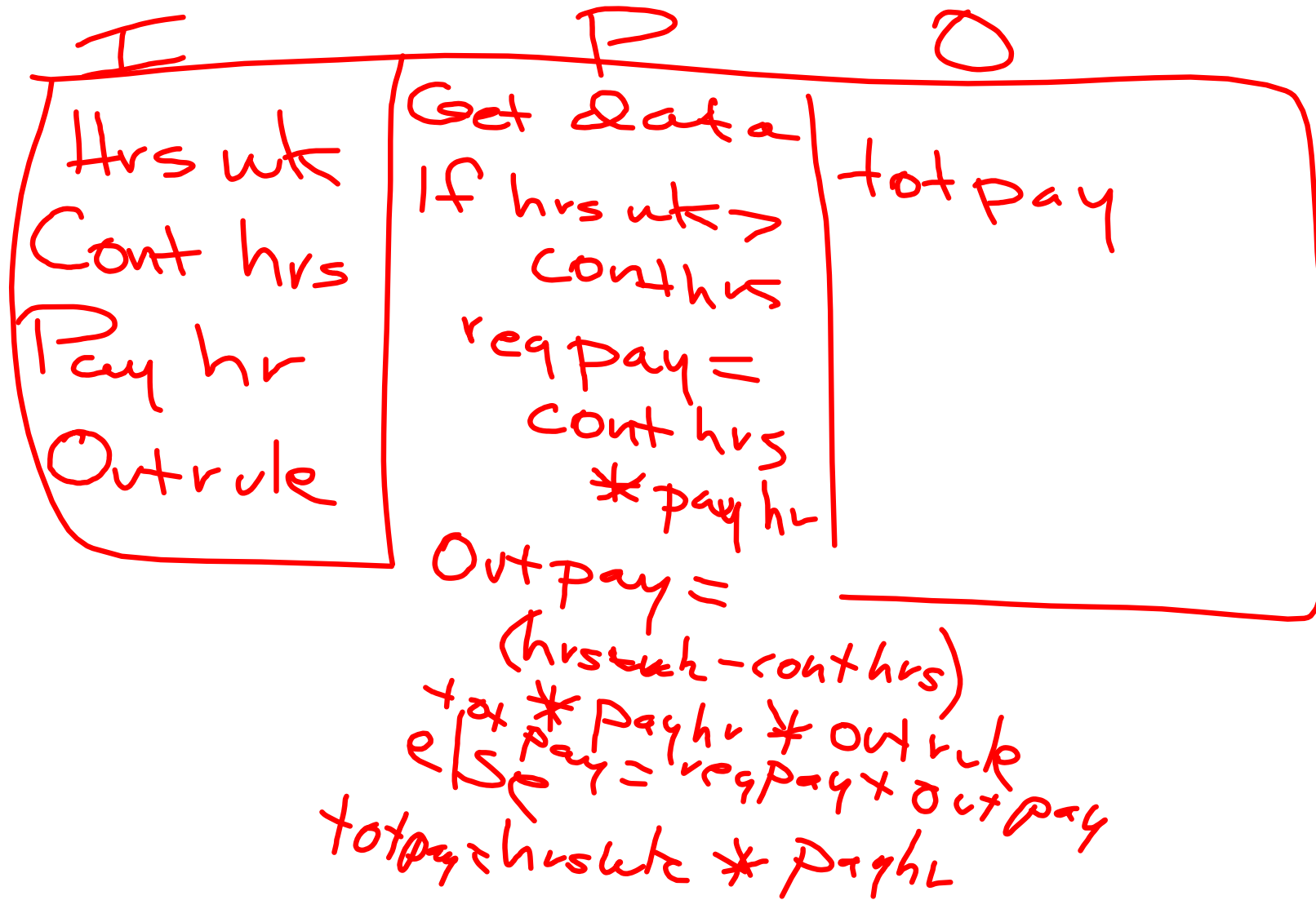
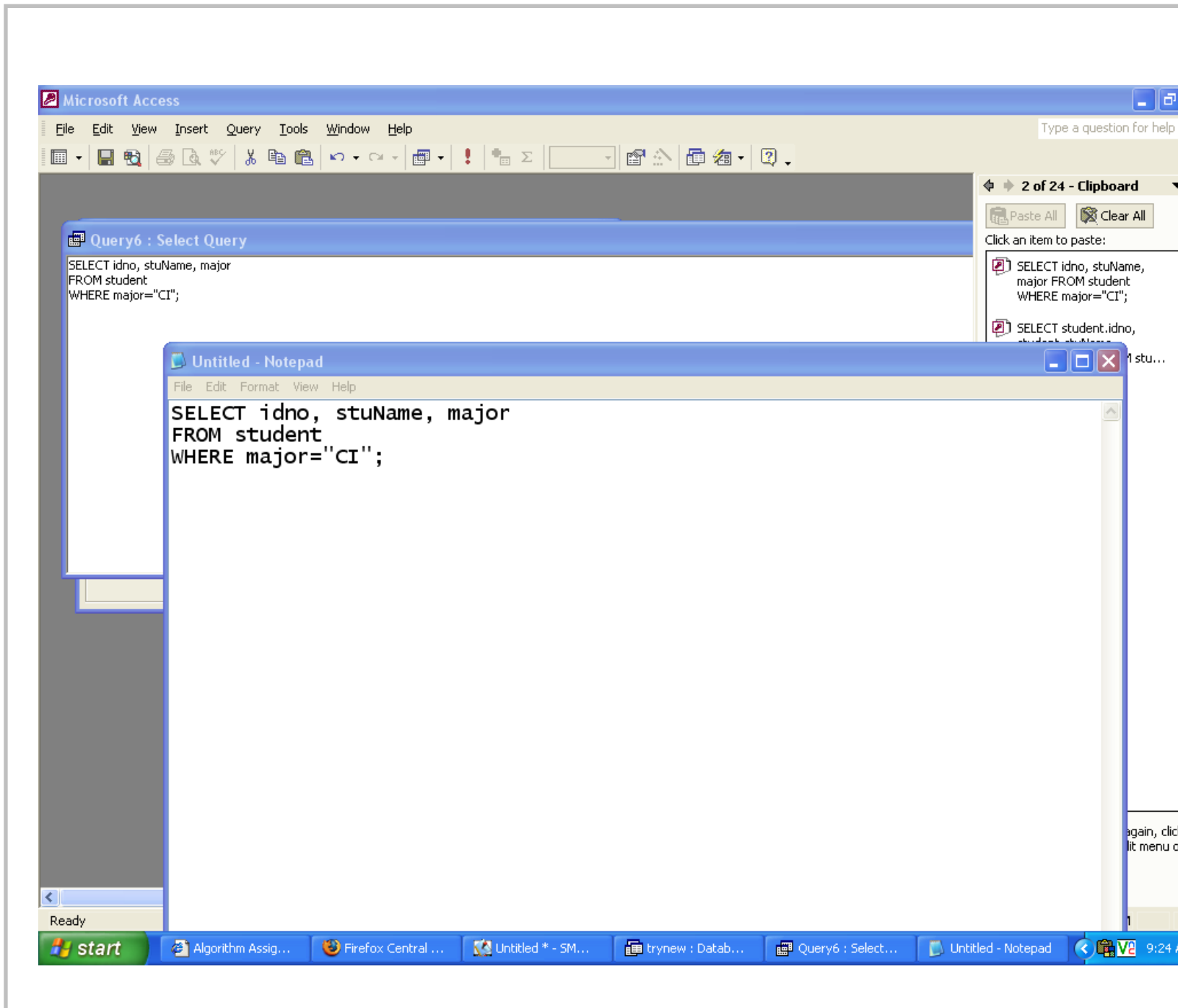
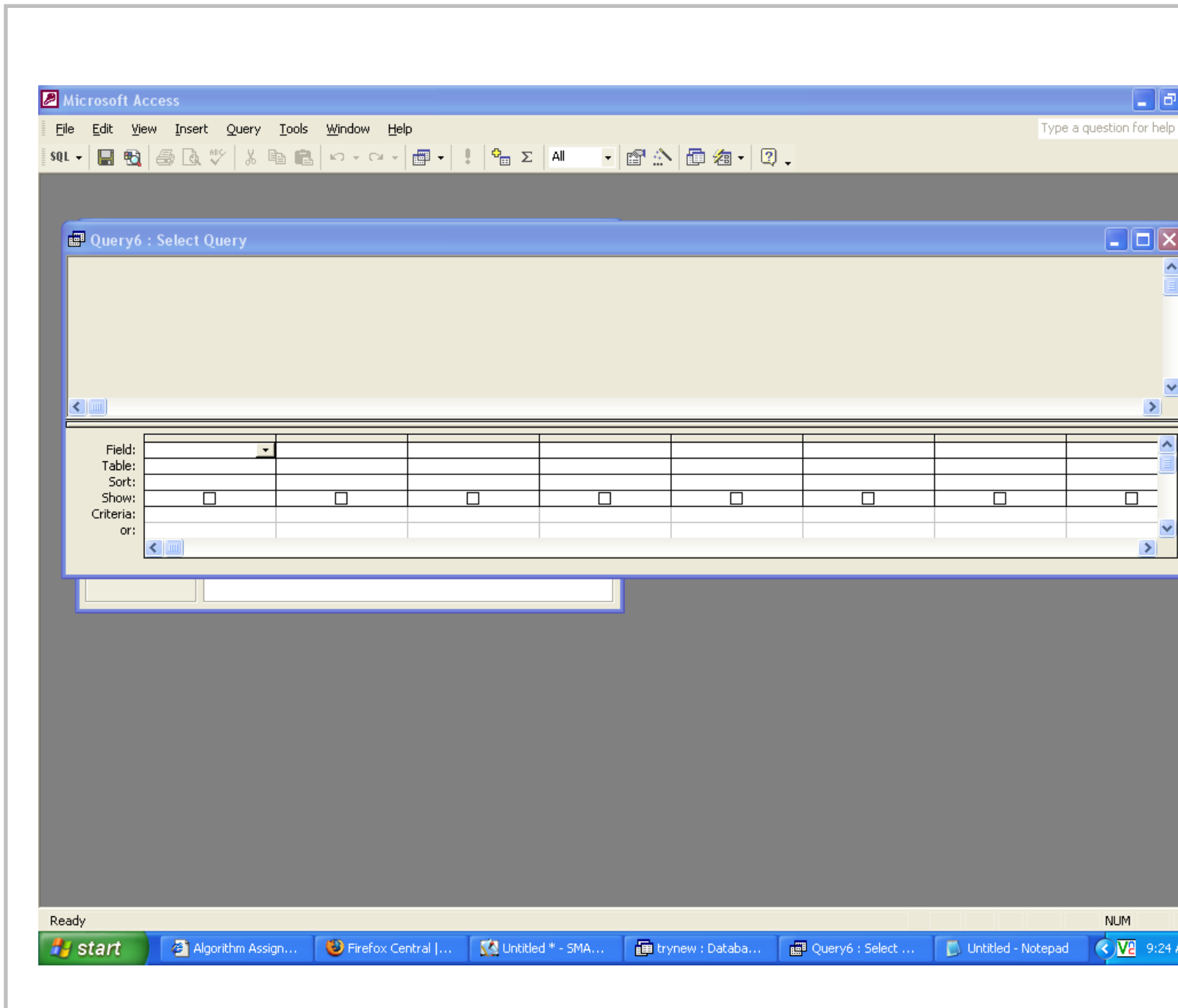


Problem #4: You need to calculate an employees pay. To do this you will need the number of hours the employee worked, the number of hours the employee is contracted to work before the employee receives overtime, the pay per hour, the rule for calculating over time (time and one half would be 1.5 while double time would be 2). Test this problem with someone who did not work over their contracted hours and again for someone who did work over their contracted hours.







Microsoft Access

File Edit View Insert Query Tools Window Help

Type a question for help

Query6 : Select Query

```
SELECT idno, stuName, major, numCrs, GPA
FROM student
WHERE major = "CI" and GPA > 3;
```

Untitled - Notepad

File Edit Format View Help

```
SELECT idno, stuName, major, numCrs, GPA
FROM student
WHERE major = "CI" and GPA > 3;
```

```
graph TD
    Start(( )) --> Cond1{major = CI}
    Cond1 -- N --> End(( ))
    Cond1 -- Y --> Cond2{GPA > 3}
    Cond2 -- N --> End
    Cond2 -- Y --> Display{display}
    Display --> End
```

Ready

start Algorithm Assign... Firefox Central |... Untitled \* - SMA... trynew : Databa... Query6 : Select ... Untitled - Notepad 9:27 A

Microsoft Access

File Edit View Insert Format Records Tools Window Help

Type a question for help

Query6 : Select Query

	idno	stuName	major	numCrs	GPA
▶	11111	John Doe	CI	12	3.6
	15347	Donald Jones	CI	5	3.8
*				0	0

Record: 1 of 2

Datasheet View

start Algorithm Assign... Firefox Central |... Untitled \* - SMA... trynew : Databa... Query6 : Select ... Untitled - Notepad 9:27 AM

NUM

*Handwritten red annotations: "CI" and "73" with arrows pointing to the major column.*

Microsoft Access

File Edit View Insert Query Tools Window Help

Type a question for help

Query6 : Select Query

```
SELECT idno, stuName, major, numCrs, GPA
FROM student
WHERE major = "CI" or GPA > 3;
```

Ready

start Algorithm Assign... Firefox Central |... Untitled \* - SMA... trynew : Databa... Query6 : Select ... Untitled - Notepad 9:30 AM

Microsoft Access

File Edit View Insert Format Records Tools Window Help

Type a question for help

Query6 : Select Query

	idno	stuName	major	numCrs	GPA
▶	11111	John Doe	CI	12	3.6
	12345	Ann Smith	CI	5	2.7
	13456	Jane Brooks	CI	8	2.3
	15347	Donald Jones	CI	5	3.8
	16890	Janice Ames	BU	8	3.8
*				0	0

Record: 1 of 5

Datasheet View

start Algorithm Assign... Firefox Central |... Untitled \* - SMA... trynew : Databa... Query6 : Select ... Untitled - Notepad 9:31 AM

CI

not > 3

Microsoft Access

File Edit View Insert Query Tools Window Help

Type a question for help

Query7 : Select Query

```
SELECT *
FROM student
WHERE major = "CI" and (numCrS > 6 or GPA > 3);
```

Untitled - Notepad

File Edit Format View Help

```
SELECT *
FROM student
WHERE major = "CI" and (numCrS > 6 or GPA > 3);
```

Ready

start Algorithm Assign... Firefox Central |... Untitled \* - SMA... trynew : Databa... Query7 : Select ... Untitled - Notepad 9:35 A



Microsoft Access

File Edit View Insert Format Records Tools Window Help

Type a question for help

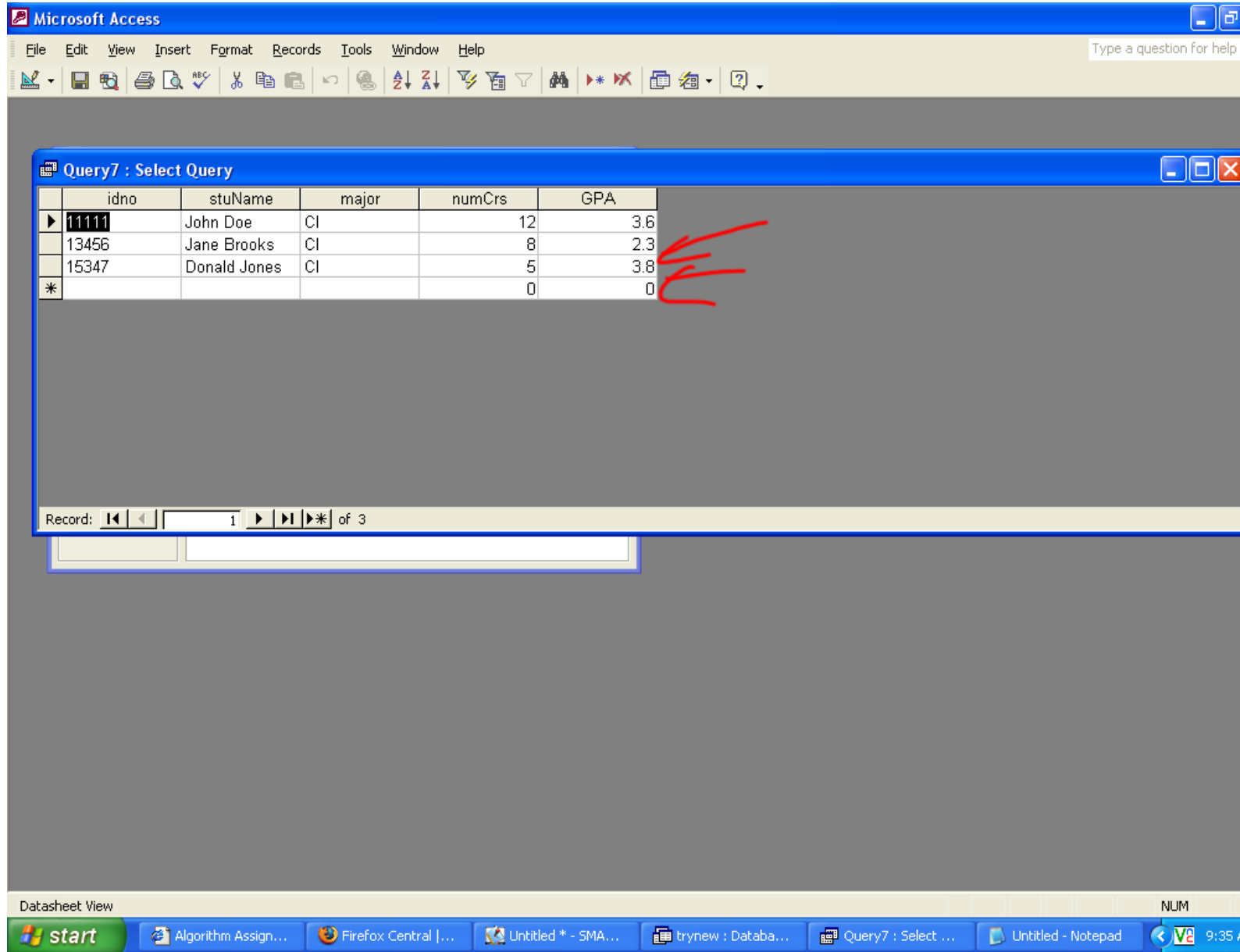
Query7 : Select Query

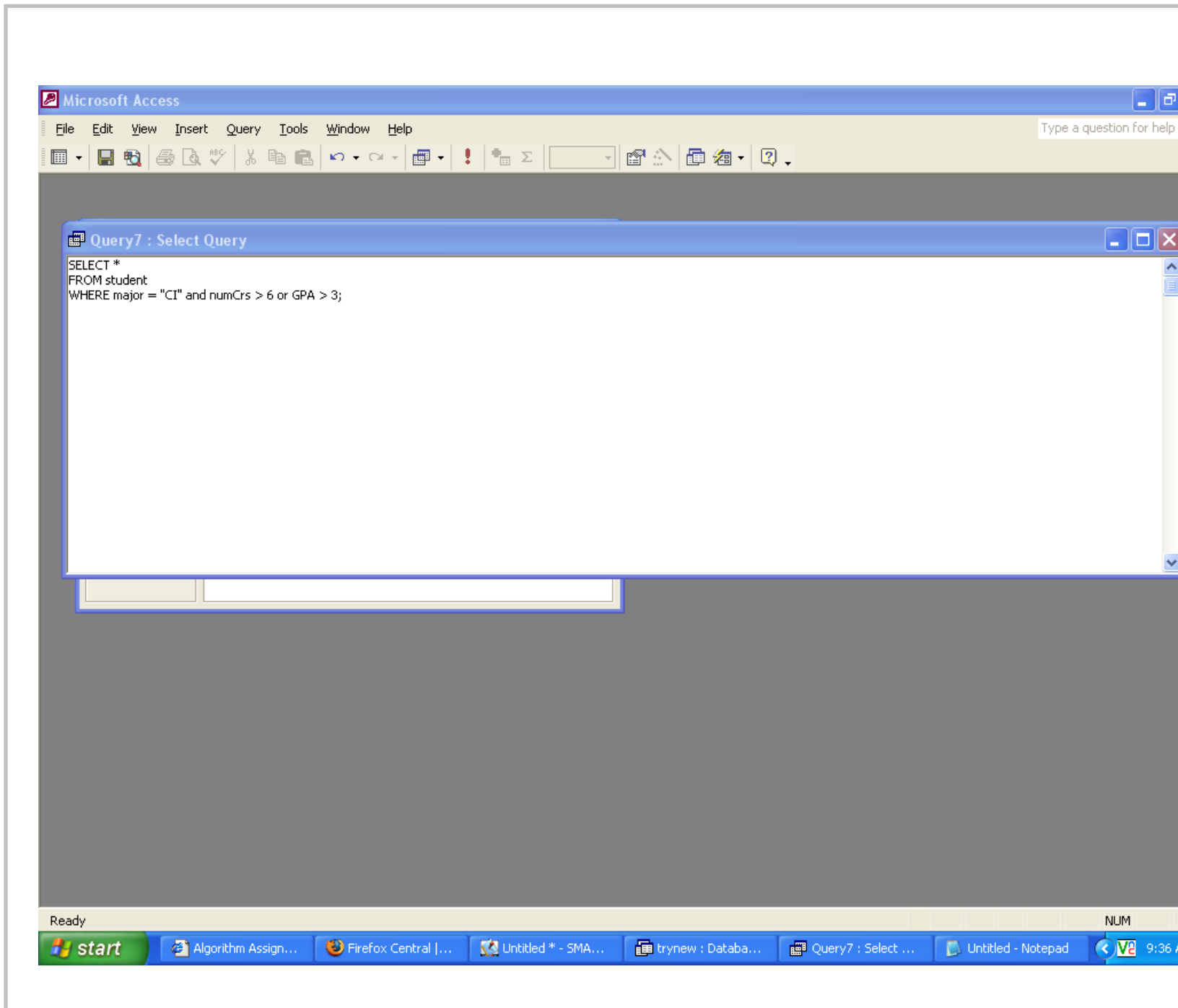
	idno	stuName	major	numCrs	GPA
▶	11111	John Doe	CI	12	3.6
	13456	Jane Brooks	CI	8	2.3
	15347	Donald Jones	CI	5	3.8
*				0	0

Record: 1 of 3

Datasheet View

start Algorithm Assign... Firefox Central |... Untitled \* - SMA... trynew : Databa... Query7 : Select ... Untitled - Notepad 9:35 AM





Microsoft Access

File Edit View Insert Format Records Tools Window Help

Type a question for help

Query7 : Select Query

	idno	stuName	major	numCrs	GPA
▶	11111	John Doe	CI	12	3.6
	13456	Jane Brooks	CI	8	2.3
	15347	Donald Jones	CI	5	3.8
	16890	Janice Ames	BU	8	3.8
*				0	0

Record: 1 of 4

major = 'CI' and numCrs > 6 or GPA > 3

group

Stand alone

Stand alone

Datasheet View

start Algorithm Assign... Firefox Central |... Untitled \* - SMA... trynew : Databa... Query7 : Select ... Untitled - Notepad 9:37 AM